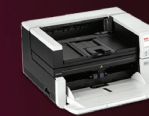


Information capture that makes sense

Automate your business processes with smart scanning technology that works out of the box and plays well with your software



Kodak Model	Scan Station 730EX Plus	ScanMate i940	E1025/E1035	S2040/S2050/S2070	S2060w/S2080w	S2085f	S3060/S3100/S3100f
Market Segment	Departmental	Personal	Workgroup	S2040 Workgroup S2050/S2070 Departmental	Departmental	Departmental	Low Volume
Speed PPM/IPM Portrait @ 300 DPI	70/140	20/40	E1025 25/50 E1035 35/70	S2040 40/80 S2050 50/100 S2070 70/140	S2060w 60/120 S2080w 80/160	85/170	S3060 60/120 S3100 100/200 S3100f 100/200
ADF Capacity	75 pgs	20 pgs	80 pgs	80 pgs	80 pgs	300 pgs	300 pgs
Daily Duty (pgs)	6K	1K	E1025 3K E1035 4K	S2040 5K S2050 6K S2070 10K	S2060w 9K S2080w 12K	20K	S3060 25K S3100 45K S3100f 45K
Supported Paper Wt.	34-200 g/m ²	30-398 g/m ²	27-433 g/m ²	27-433 g/m ²	27-433 g/m ²	45-200 g/m ²	45-200 g/m ²
Interface(s)	Gigabit Ethernet	USB 2.0	USB 3.0	USB 3.1	USB 3.1 Gigabit Ethernet 802.11 b/g/n	USB 3.1 Gigabit Ethernet	USB 3.2, Gigabit Ethernet
Drivers/API	N/A	TWAIN/ISIS/WIA/ SANE	TWAIN/ISIS/WIA/ SANE	TWAIN/ISIS/WIA/ SANE	TWAIN/ISIS/WIA/ SANE/RESTful API	TWAIN/ISIS/WIA/ SANE/RESTful API	TWAIN/ISIS/WIA/ SANE/RESTful API
Supported OS	N/A	WINDOWS 8.1/10/11 LINUX	WINDOWS 8.1/10/11 WINDOWS SERVER 2012R2/2016, CITRIX, LINUX	WINDOWS 8.1/10/11 WINDOWS SERVER 2012/2016, CITRIX, LINUX	WINDOWS 8.1/10/11 WINDOWS SERVER 2012/2016, CITRIX, LINUX	WINDOWS 8.1/10/11 WINDOWS SERVER 2012/2016/ 2019/2022, CITRIX, LINUX	WINDOWS 8.1/10/11 WINDOWS SERVER 2012/2016/2019/2022, LINUX SANE, CITRIX
Capture Pro Group	N/A	A	A	A	S2060w A; S2080w B	B	C
Warranty	12 months AUR, 4 business days response time	12 months onsite, 3-4 business days response time	12 months onsite, 3-4 business days response time	3-Years AUR, optional upgrade to 5 years	3-Years AUR, optional upgrade to 5 years	3-Years AUR), optional next business day on- site service*	12 months onsite, 3-4 business days response time
EPEAT	✓	✓	✓	✓	✓	✓	✓

Hard-working, easy-to-use software

Smart Touch:

Ideal for ad hoc document capture and output to a file, email, printer or MICROSOFT SHAREPOINT

- Bundled with select scanners from Kodak Alaris
- Output documents in a variety of file formats
- Easily configure locations, then scan with one touch

Capture Pro:

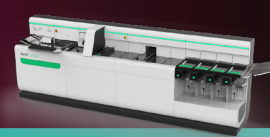
Kodak Capture Pro Software is the complete capture software application that allows you to scan, process, utilise, and manage documents and important data from those documents. Get powerful, flexible and affordable batch capture with **Kodak** Scanners – and scanners from other popular manufacturers – in desktop to high volume production environments.

Info Input Solution:

Kodak Info Input Solution enables faster capture and access to information – at the office or remotely. Info Input Solution is a web-based and mobile capture application that is easy for workers across departments and enterprises to implement and use. Info Input offers high-speed scanning with real-time image display, indexing, and bar code detection.

Production capture that makes sense

Processes large volumes with smart scanning technology that streamlines operations



Kodak Model	S3120 Max/S3140 Max	i4250/i4650/i4850	i5250/i5650/i5850	i5650S/i5850S	IBML ImageTrac DS 1085	IBML ImageTrac DS 1155/DS 1210	IBML Fusion™
Market Segment	S3120 Max Low Volume S3140 Max Mid Volume	i4250 Low Volume i4650/i4850 Mid Volume	i5250 Mid Volume i5650/i5850 High Volume	High Volume	Departmental	High Volume	High Volume
Speed PPM/IPM Portrait @ 300 DPI	S3120 Max 120/240 S3140 Max 140/180	i4250 110/220 i4650 130/260 i4850 150/300	i5250 150/300 i5650 180/360 i5850 210/420	i5650S 180/360 i5850S 210/420	Up to 85 ppm B&W & Colour	Up to 155/210 ppm B&W & Colour	Up to 730 ppm @ 200dpi, up to 485 ppm @ 300 dpi, B&W & Colour
ADF Capacity	500 pgs	500 pgs	750 pgs	750 pgs	300 pgs	550 pgs	1.500 pgs
Daily Duty (pgs)	S3120 Max 60K S3140 Max 70K	i4250 65K i4650 100K i4850 150K	Unlimited	Unlimited	20K	Unlimited	Unlimited
Supported Paper Wt.	34-430 g/m ²	45-200 g/m ²	45-200 g/m ²	45-200 g/m ²	40-210 g/m ²	40-210 g/m ²	45-200 g/m ²
Interface(s)	USB 3.2, Gigabit Ethernet	USB 3.0	USB 2.0	USB 2.0	USB 3.0	USB 3.0	
Drivers/API	TWAIN/ISIS/WIA/SANE/RESTful API	TWAIN/ISIS/WIA/SANE	TWAIN/ISIS/WIA	TWAIN/ISIS/WIA	TWAIN	TWAIN/ISIS	
Supported OS	WINDOWS 8.1/10/11 WINDOWS SERVER 2012/2016/ 2019/2022, LINUX SANE, CITRIX	WINDOWS 8/8.1/10/11, LINUX	WINDOWS 8/8.1/10/11	WINDOWS 8/8.1/10/11	WINDOWS 10 Professional	WINDOWS 10 Professional	
Capture Pro Group	S3120 Max C ; S3140 Max D	i4250 DX ; i4650/i4850 E	i5250 E ; i5650 F ; i5850 G	i5650S F ; i5850S G	N/A	N/A	N/A
Warranty	12 months onsite, 3-4 business days response time	12 months onsite, 3-4 business days response time	12 months onsite, 3-4 business days response time	12 months onsite, 3-4 business days response time	1 year on-site	1 year on-site	1 year on-site
EPEAT	✓	✓	✓	✓			

Optional flatbed accessories are available and compatible with select scanners.

Services that protect and advance your organisation

Along with award-winning remote and on-site service that keeps you up and running and protects your investments, Kodak Alaris and our partners create remarkable, innovative custom solutions. From records management to mailroom automation and beyond, we team up to create ideal answers for multiple industries.

From digitisation to transformation, Kodak Alaris is there from the start. We transform documents and data into information better than anyone else bringing Speed, Accuracy, and Profitability to your business. To learn more about products and solutions from Kodak Alaris, call 1-800-944-6171 or visit AlarisWorld.com



All trademarks and trade names used are the property of their respective holders.

The Kodak trademark and trade dress are used under license from Eastman Kodak Company.

© 2022 Kodak Alaris Inc. TM/MC/MR: Alaris, ScanMate 6/22



Services from **Kodak alaris**



2022 • 2021 • 2020
2018 • 2017 • 2016